

TESORO®

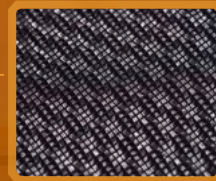
# ALPHAEON e3

Ergonomic Chair

Meet the perfect ergonomic style



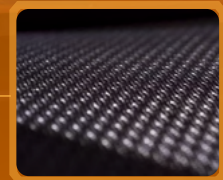
ULTRA WIDE ANGLED  
HEADREST, 2D NECK  
ADJUSTMENT



HYBRID SURFACE  
REINFORCED DuPont™  
TPEE MESH



2D ADJUSTABLE  
LUMBAR SUPPORT,  
21° RECLINE TILT



ANTI-RIP/TEAR BIFMA  
CERTIFIED 120,000  
CYCLES



4D ADJUSTABLE  
ARMREST



AIR BASE SLIDE  
ADJUSTMENT



TÜV CERTIFIED  
CLASS4 GAS LIFT



HOLO WHEELS, SOFT,  
QUIET & DURABLE



ALLOY WHEELBASE  
LIGHTWEIGHT &  
ANTI-CORROSIVE



Innovation Redefined

[www.tesorotec.com](http://www.tesorotec.com)

## Dimensions



## Specifications

<b>Model Name</b>	E3
<b>Chair Type</b>	Ergonomic chair
<b>Chair/Seat Back Style</b>	High-back
<b>Mesh</b>	Reinforced DuPont™ TPEE MESH
<b>Color</b>	#Black
<b>Adjustable Armrests</b>	4D
<b>Mechanism Type</b>	Multi-functional
<b>Adjustable Tilt Angle</b>	21 degree
<b>Tilt Lock</b>	Yes
<b>Leaning Angle</b>	4 levels
<b>Gas Lift Class</b>	TÜV Class 4
<b>Lift Distance</b>	8.5 cm

<b>Seat Size</b>	52 x 52 cm
<b>Seat Depth Adjustment</b>	5 cm adjustable
<b>Adjustable Lumbar</b>	2D adjustable
<b>Adjustable Headrest</b>	Hybrid (PU+Reinforced DuPont™ TPEE MESH)
<b>Base Type</b>	700mm size aluminum
<b>Caster Size &amp; Material</b>	65mm Hollow wheels
<b>Package Size</b>	87 × 67 × 37 cm
<b>Container Loading</b>	20'GP: 126 / 40'GP: 270 / 40'HQ: 308
<b>Net Weight (Approximate)</b>	21.2 kg
<b>Gross Weight (Approximate)</b>	25.7 kg
<b>Weight Capacity</b>	136 kg
<b>Certifications</b>	All parts are BIFMA certified

Product name	EAN	UPC	Model NO
Alphaeon E3 Ergonomic Chair (DuPont™TPEE MESH)	0 732330 417110	732330 417110	TS-E3-BK

**Innovation Redefined**

[www.tesorotec.com](http://www.tesorotec.com)